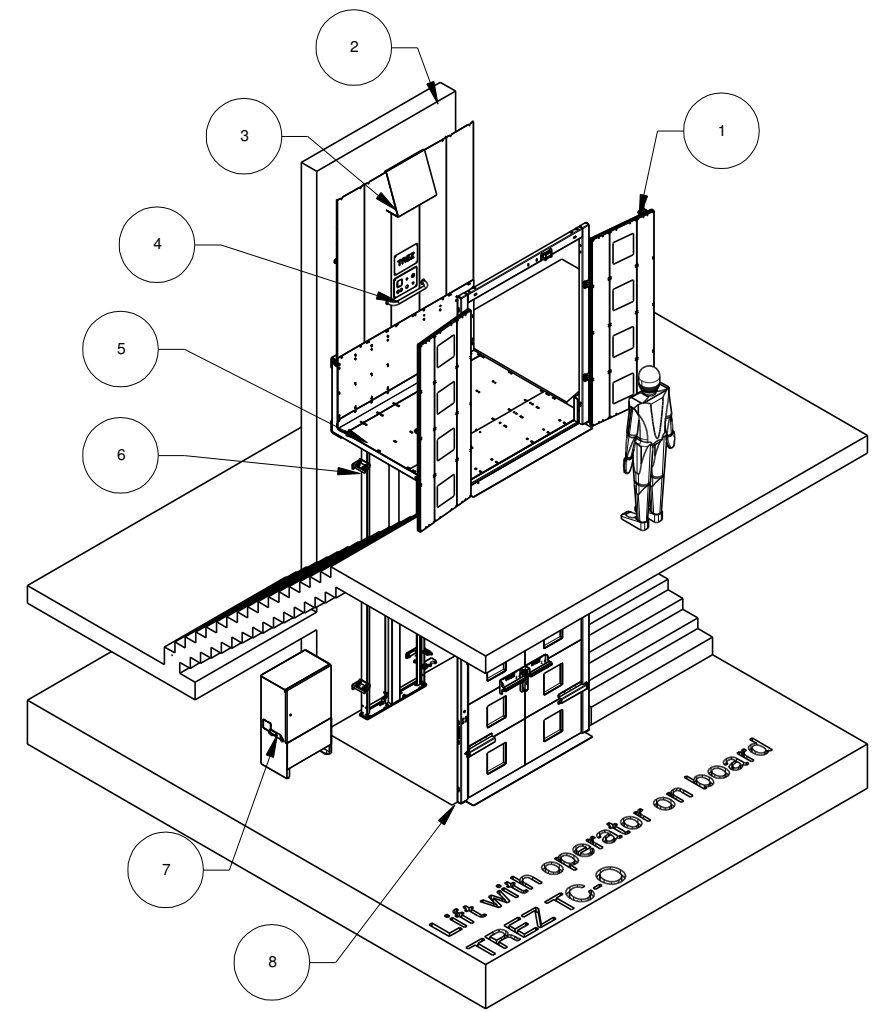
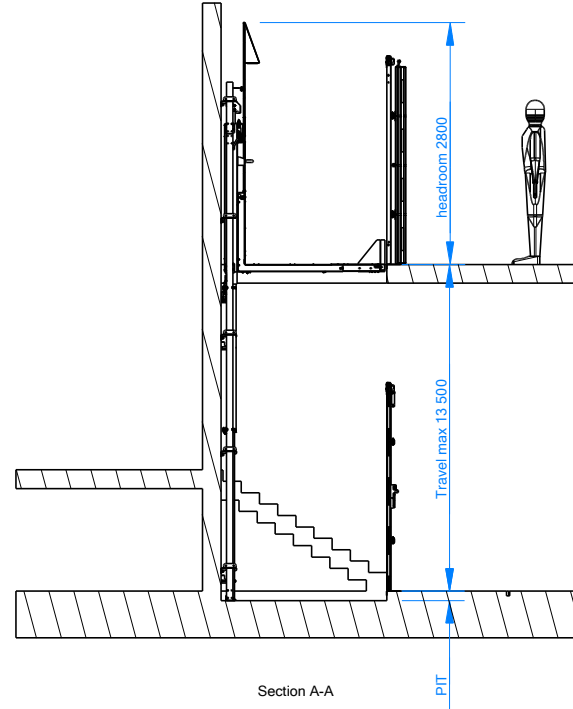
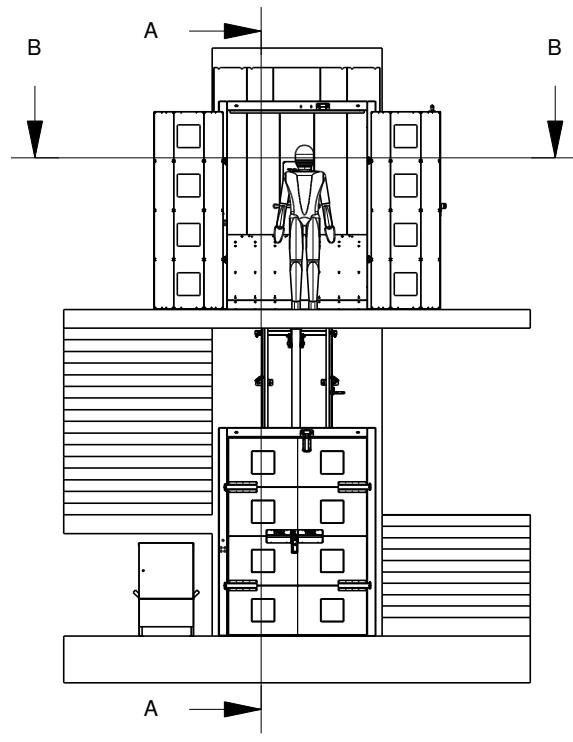
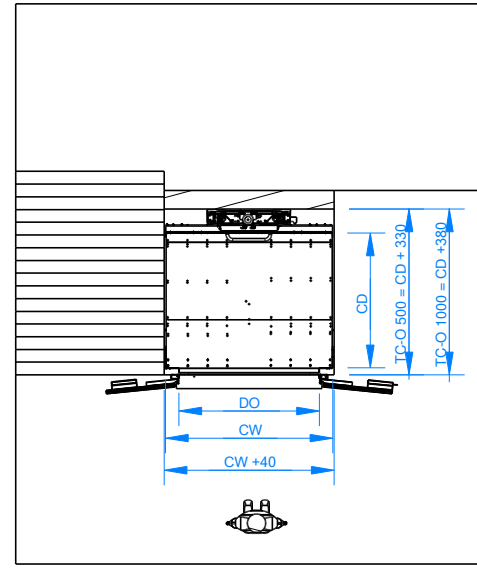


A
B
C
D
E
F

A
B
C
D
E
F



- 1) Landing door
- 2) Reinforced concrete wall
- 3) Light
- 4) Operation panel
- 5) Platform
- 6) Guide rails
- 7) Power cabinet
- 8) Pit or ramp



Section B-B

Model	Safe working load	Power	PIT	Usefull platform wide CW	Usefull platform depth CD
TC-O 500	500 kg	3 kW	120 mm	max 2000 mm	max 1500 mm
TC-O 1000	1000 kg	4 kW	150 mm	max 2000 mm	max 1500 mm

Itemref	Quantity	Title/Name, designation, material, dimension etc	Article No./Reference		
Drawn by	Checked by	Approved by - date	File name	Date	Scale
Goods lift with an operator on board TC-O Speed 0.15 m/s Power supply 3x400 VAC In accordance with the terms of the Machinery Directive 2006/42/EC			TC-O	TREZ	
				Edition	Sheet