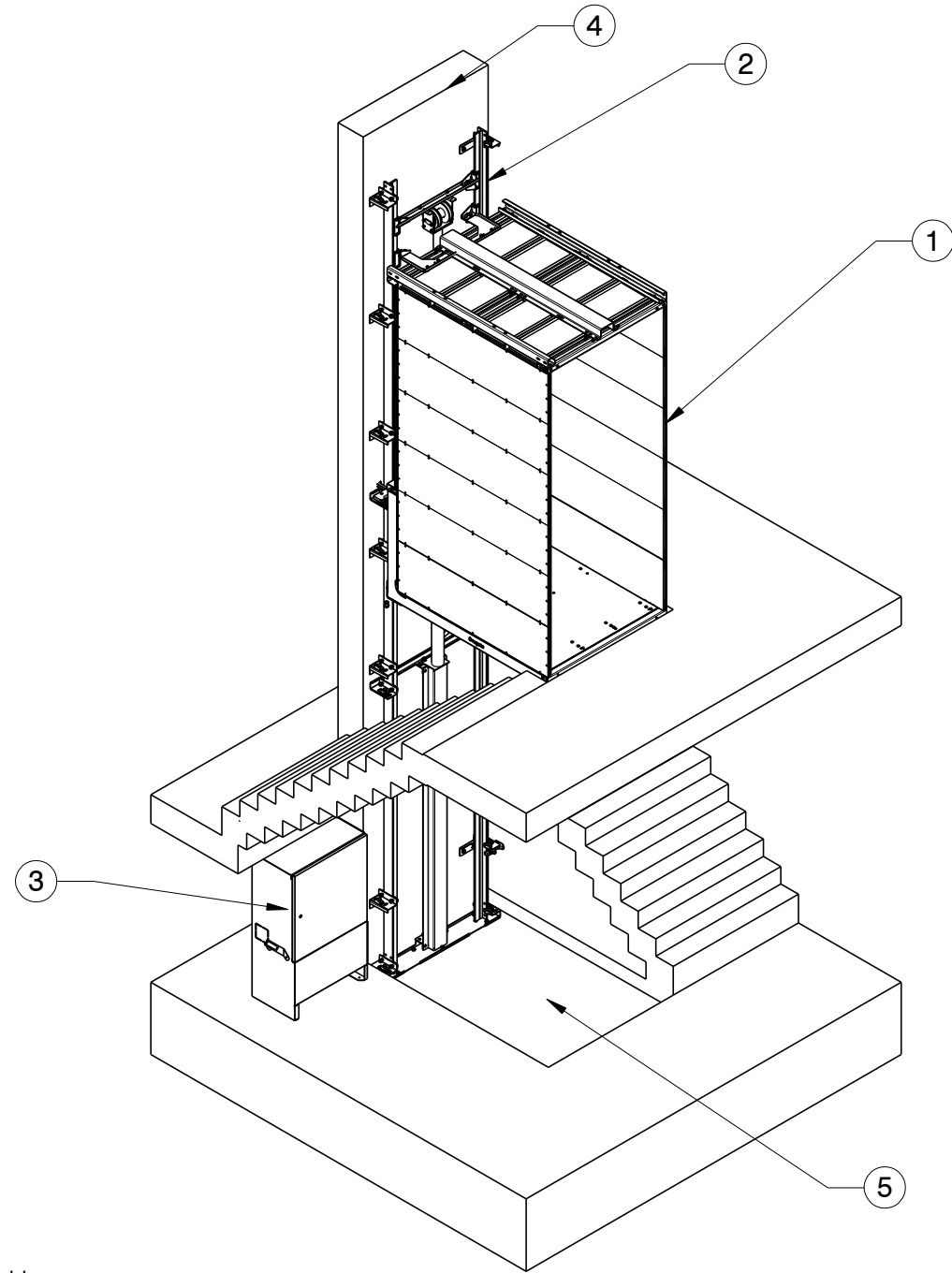
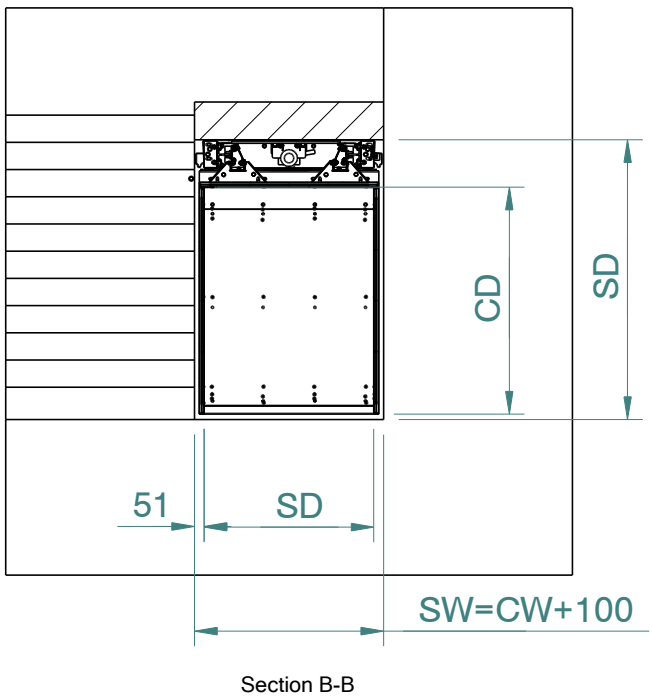
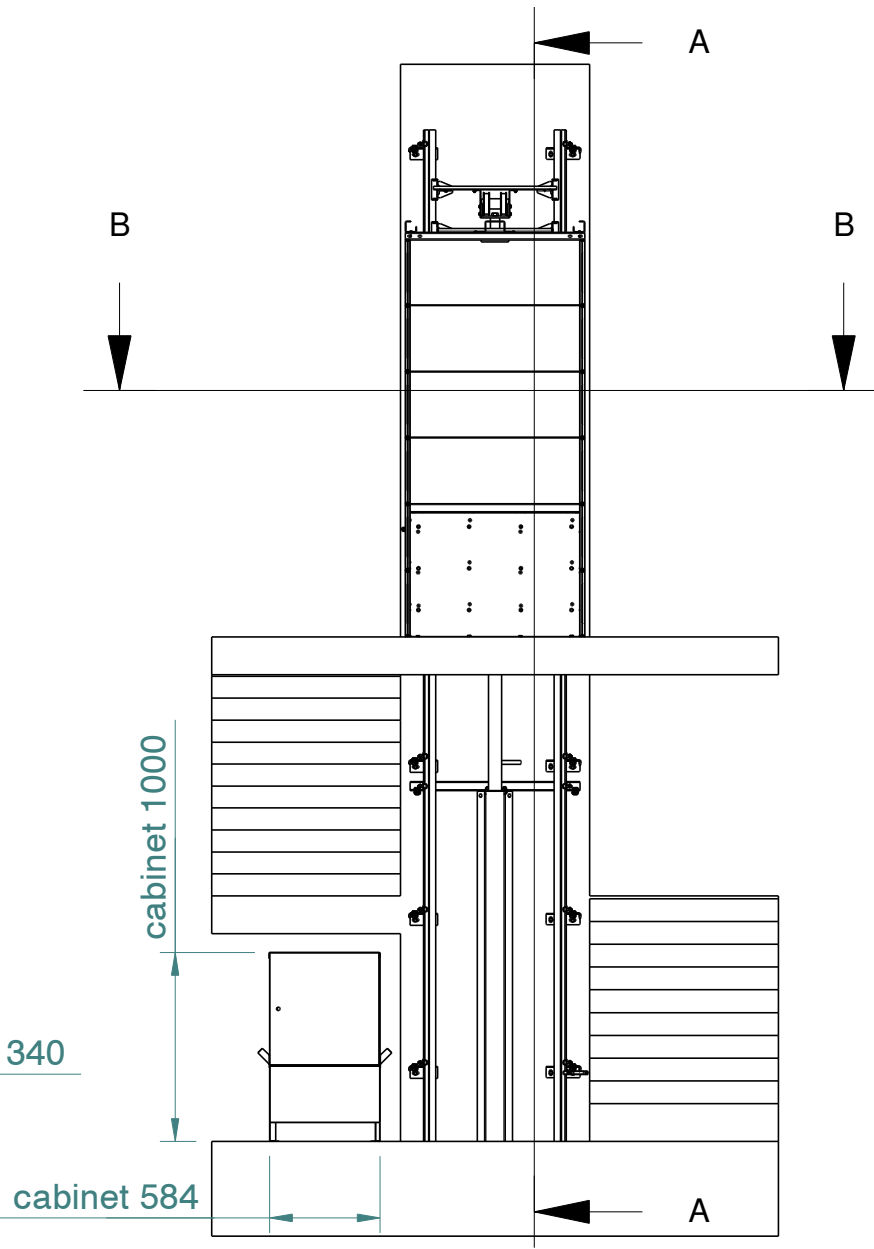
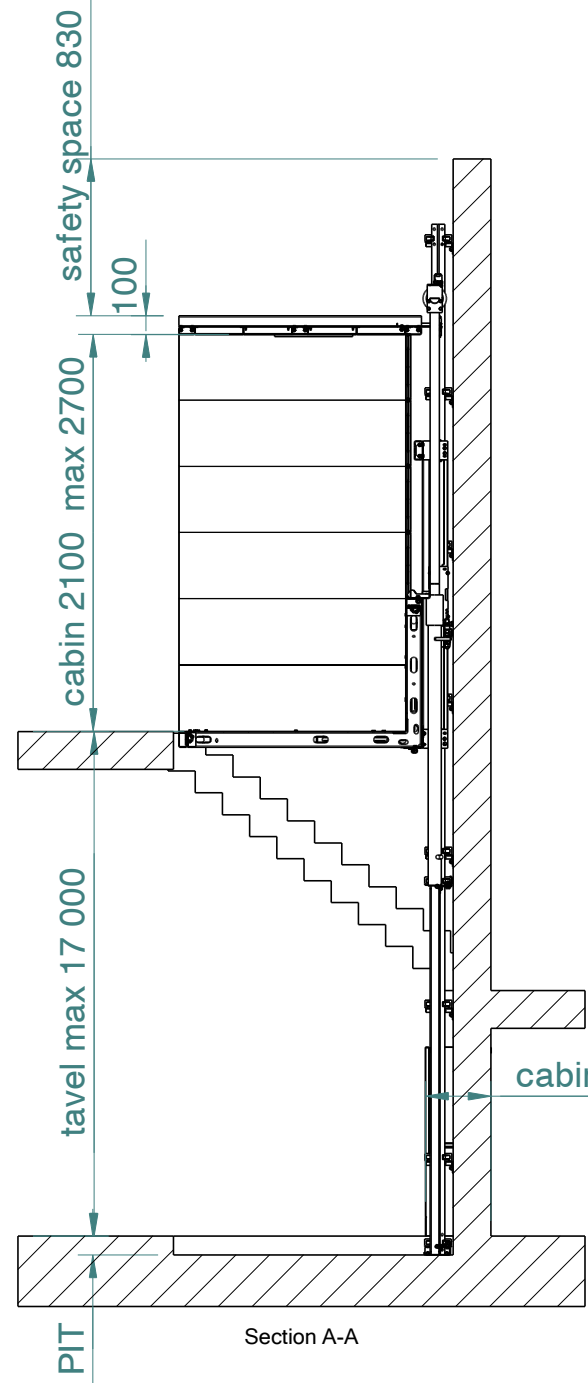


A
B
C
D
E
F

A
B
C
D
E
F



- 1) cabine
- 2) guide rails
- 3) mashine cabinet
- 4) concrete wall
- 5) pit

Model	Max load	Power	PIT	Cabine Depth (CD)	cabine wide (CW)	Shaft Depth (SD)
TC 500	500 kg	1.1 kW	100 mm	max 1500 mm	min 600 max 2500	CD +280
TC 1000	1000 kg	2.2 kW	120 mm	max 1500 mm	min 850 max 2000	CD + 330
TC 1500	1500 kg	3.5 kW	120 mm	max 1300 mm	min 1300 max 2000	CD + 380

TC 500, TC 1000 and TC 1500
speed 0.13 m/s
in conformity with 2006/42/EC

TC with cabine
Edition
Sheet

TREZ
lifts from Bulgaria