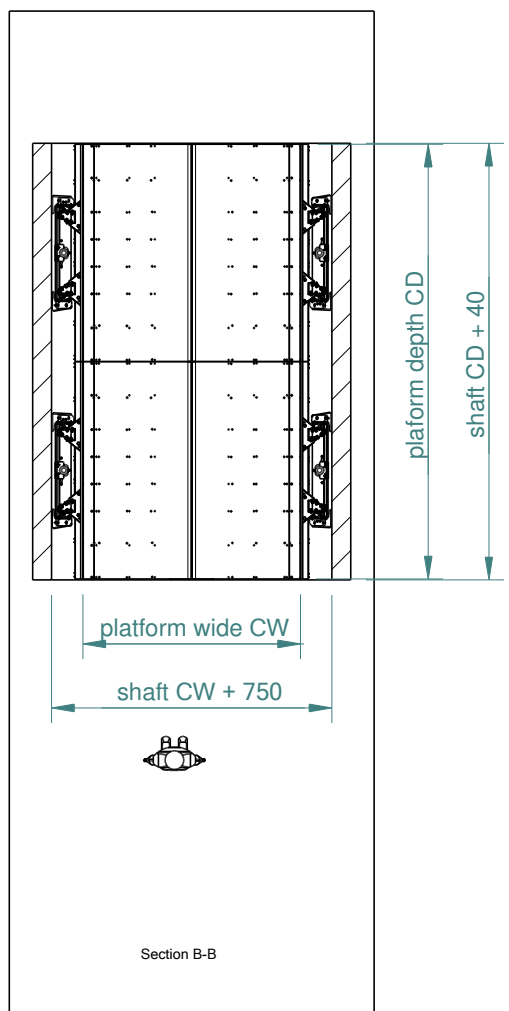


- 1) Platform
- 2) Guiderails
- 3) Power cabinet
- 4) Reinforced concrete wall
- 5) Pit



Model	Safe working load	Power	PIT	Usefull platform wide CW	Usefull platform depth CD
TC 4C 1500	1500 kg	5.5 kW	180 mm	2900 mm	5400 mm
TC 4C 2000	2000 kg	7.5 kW	250 mm	2300 mm	5400 mm
TC 4CHD	3000 kg	12 kW	250 mm	2000 mm or more	5400 mm or more
TC 4CHD	4000 kg	15 kW	300 mm	2000 mm or more	5400 mm or more
TC 4CHD	5000 kg	20 kW	400 mm	2000 mm or more	5400 mm or more
TC 4CHD	6000 kg	25 kW	500 mm	2000 mm or more	5400 mm or more
TC 4CHD	6t and more	make a request	make a request	make a request	make a request

Itemref	Quantity	Title/Name, designation, material, dimension etc			Article No./Reference
Drawn by	Checked by	Approved by - date	File name	Date	Scale
Goods only lift TC 4C Speed 0.13 m/s Power supply 4x400 VAC In accordance with the terms of the Machinery Directive 2006/42/EC				TC 4C	TREZ
				Edition	Sheet